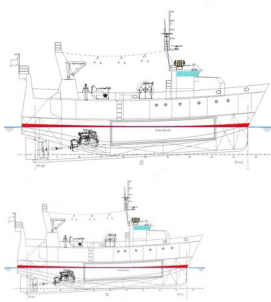


NEW BUILD - 28m Fishing Vessel



NEW BUILD - 28m Fishing Vessel

Rating: Not Rated Yet

[Ask a question](#)

Description

TYPE OF VESSEL

The ship is a fishing vessel with steel hull designed specifically for STERN trawling. The ship will also include appropriate means for the conservation of fish on board, applicable to this type of fishing activity. The machinery space will be installed in the aft part of the ship as per general arrangement. Propulsion is provided by a diesel engine (MAK 6M332 (1200 hp @ 750 rpm)) via a marine gearbox, a fixed pitch propeller B-SKEW Series with 4 blades working with a nozzle.

MAIN PARTICULARS

Length over all: 28m
Length between perpendiculars: 24.10m
Breadth moulded: 8m
Depth moulded 3.90 m
Design Load Draft 3.50 m

Final dimensions are to be confirmed by the builder and are to be approved by the Owners, prior to contract placement.

CARGO HOLD

Capacity 150 m³ (approx.)

TANK CAPACITIES

Fuel 100 m³ (approx.)
Fresh water 10 m³ (approx.)
Lube oil 2 m³ (approx.)
Sludge 3 m³ (approx.)

GROSS TONNAGE AND REGISTERED - VOLUME BELOW MAIN DECK

The gross tonnage shall be approximately 300 GT.

POWER AND SPEED

Maximum engine power, continuous 1200 HP @ 750 rpm Engine: MAK 6M332

Rated speed (90% MCR (maximum power)): 12.0 knots

The final main engine selection, output rating and speed/power performance is to be agreed with the Owner, after optimization of final hull lines and ship model tests etc. have been carried out.

fishing vessel : NEW BUILD - 28m Fishing Vessel

CREW

The vessel will have accommodation for a crew of 12 persons distributed according to the plan of the General Arrangement, as the requirement of the Owner.

GENERAL ARRANGEMENT

The general arrangement of the vessel is normally indicated on the attached General Arrangement plan for this specification, according to the Owner. The vessel should generally follow the "General Arrangement" drawing except where options may be agreed by builders, owners and consultants. An engineer's workshop / store is to be sited aft of the machinery space.